

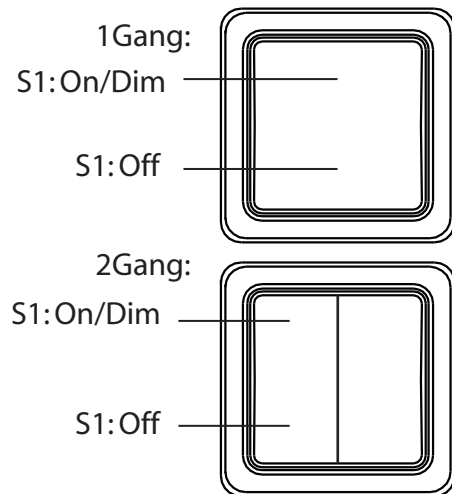


HomeEasy Remote Control Light Switch

V1.0

The HE-307 and HE-308 Remote Control light switches are expansion units for the HomeEasy range of products and designed to work with all the HomeEasy receiver sockets and modules.

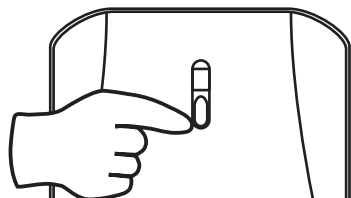
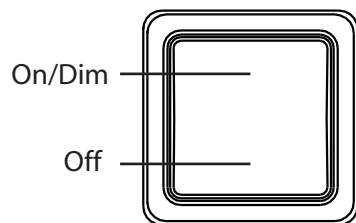
Additional HomeEasy receiver products are required for the HE-307/HE-308 to work.



Product Operation:

Pairing/Deleting with Remote Control:

Up to Six remote controls can be paired with each Receiver Socket or Module. To pair the switch and a socket together, press "Learn" button. The LED will start to flash, now press the selected "ON" button on the remote control, the LED will stop flashing. The units are now paired together, you can test this by pressing the selected "On/Off" button.



Always refer to the original instruction when using with additional products

Deleting Remote Control:

To delete a remote control that has been paired with a HomeEasy Receiver socket or module, simply press the "Learn" button. The LED will start to blink; press the "Off" button on the remote control, the LED will blink twice to confirm that the remote control has been removed from the receiver sockets memory.

Remote Socket reset:

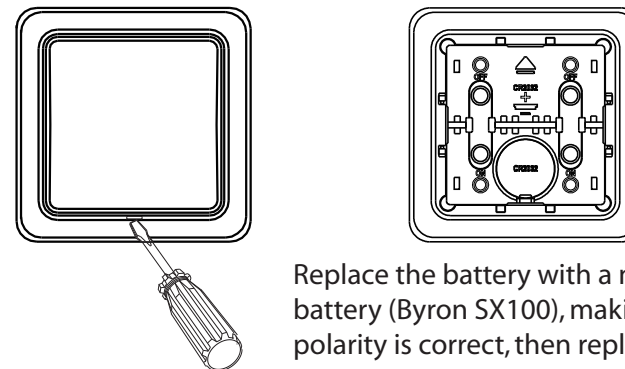
To delete all the remote control units from the memory of the Receiver Socket or module, hold the "Learn" button for more than 6 seconds, the LED will start to blink continuously. Press the learn button again, the LED will blink twice to confirm the deletion of all remote controls from the receiver memory.

Dimming: (Compatible Receivers Only)

To dim a compatible receiver socket or module, switch the receiver on and then press "On" again. The unit will now start to dim to select the required level press "On" again.

Changing Battery:

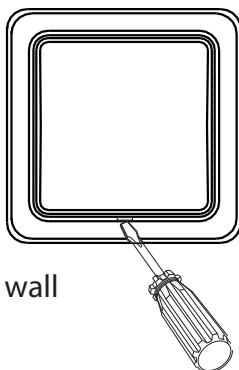
Using a small flat screwdriver remove the front cover by placing the screw driver in the location notch on the bottom part of the rocker cover and unclip the cover.



Replace the battery with a new CR2032 battery (Byron SX100), making sure the polarity is correct, then replace the front cover.

Installation:

Using a small flat screwdriver remove the front cover by placing the screw driver in the location notch on the bottom part of the rocker cover and unclip the cover.



Once the location for the switch has been selected, the wall switch can be stuck or screwed to the wall

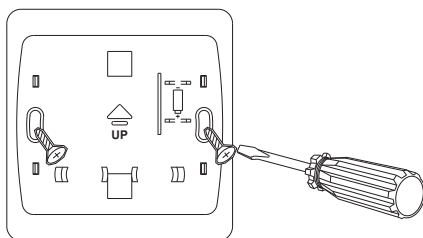
WARNING: Attaching the HE-307/308 to a metallic surface will reduce the operating distance.

1: To stick the HE-307/308 to the wall, clean the surface of all loose material and grease using an appropriate cleaner (an alcohol based cleaner is recommended for tiled surfaces).

When the surface is dry, remove the backing tabs on the double sided sticky pads located on the back of the wall switch and press firmly against the wall.

To screw the unit to the wall:

2. Using the backing bracket as a template mark and drill two holes and fix the bracket securely using the appropriate screws and wall plugs (included), make sure the arrow faces up.



Product Specification:

Remote Control: HE-307/HE-308

Battery: 3v Cr2032

Range: 30 Metres (Open Distance)

Frequency: 433.92MHz

Indoor Use Only

Warning: Never Exceed the Product Specification

Product Compatibility:

The HE-307/HE-308 remote control wall switch is compatible with all HomeEasy products

Contact:

C H Byron
34, Sherwood Rd
Aston Fields
Bromsgrove
B60 3DR

Helpline: 0845 2301 231

Tel: 0845 2301231
Fax: 01527 557701
Web: www.chbyron.com
E-mail: support@chbyron.com

Byron		433MHz	
R&TTE APPROVED CE 0560			
A	IRL	UK	M
B	L	BG	N
DK	L	CZ	SK
FIN	NL	EST	SLO
F	P	H	CH
D	E	IS	PL
GR	S	LV	RO
LT			

CH Byron Electrical United Kingdom. www.chbyron.com