

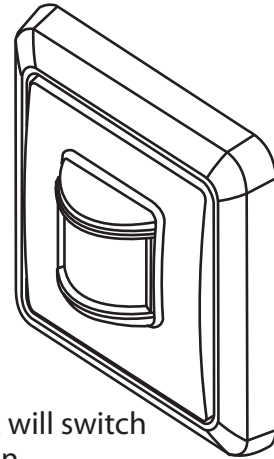


HE-303 Remote control Indoor PIR

RE-INVENTING THE HOME

The HE-303 Indoor PIR adds extra security and ease of use to your Home Easy products

- Selectable timer setting
- Selectable Detection Range
- Variable Light setting
- 25 Metre Wire Free Range
- Battery Powered 2*AAA

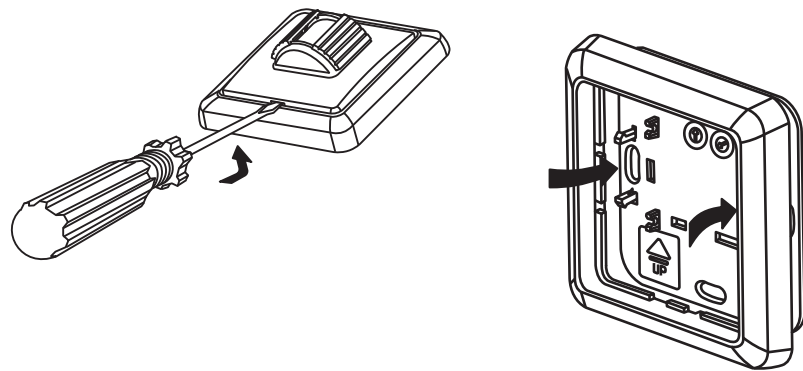


The HE-303 allows you to control your HomeEasy Receiver sockets or modules via a wire free PIR sensor. When the PIR beam is broken the indoor PIR will switch on your Remote control sockets or modules for between 5 seconds to 10 minutes, Ideal for controlling house hold lighting. Compatible with all Home Easy products.

Installation:

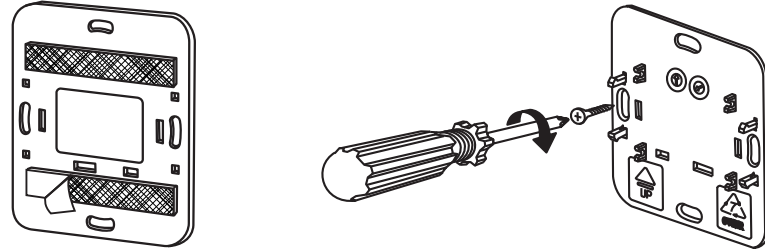
The HomeEasy Indoor PIR can be placed in any location, even in bathrooms. Only use the adhesive strip on suitable surfaces. Avoid placing the PIR in direct sunshine, above direct heat sources or on metallic surfaces.

1. Using a small screwdriver remove the front cover and base plate.



V1.0

2. The base unit can be attached to the wall using either the adhesive strips or screws (Included).

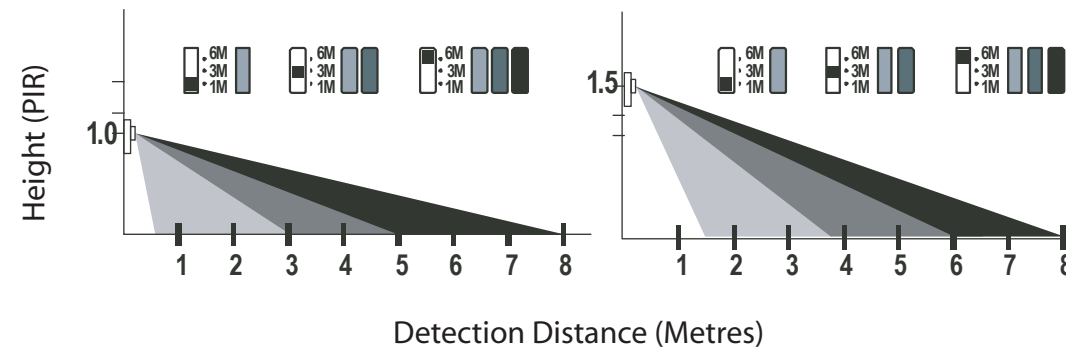
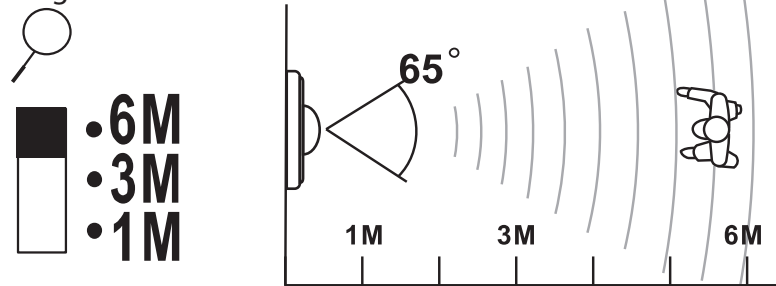


3. Replace the two front covers.

Detection Area

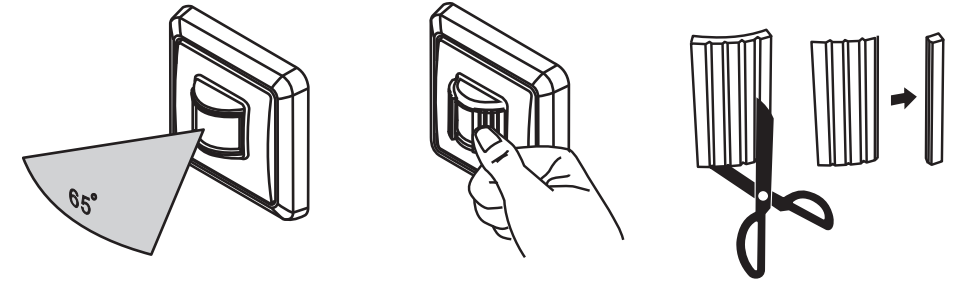
Detection Range:

The Indoor PIR has 3 selectable detection ranges: 1, 3 or 6 Metres. To alter the detection range, remove the front cover and move the slide switch to the required setting.



Detection Angle:

The PIR detection area is 65 degrees, this can be reduced using the clip-on covers (included). if required the covers can be cut to size.



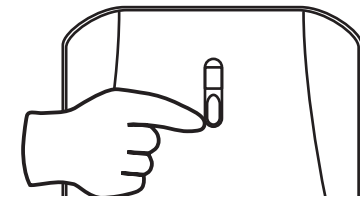
if required the covers can be cut to size.

Pairing/Deleting with Remote Control:

Up to Six remote control units can be paired with each HomeEasy Receiver socket or module, to pair the indoor PIR with a receiver unit, remove the front cover and, slide the switch to DEL.

Now press the "Learn" button, the LED will start to flash, then slide the "LEARN" switch to "SET", the units are now paired together.

Example



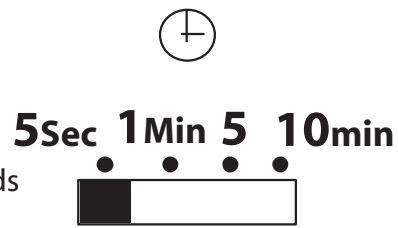
Deleting Remote Control:

To delete the PIR from the memory of a HomeEasy receiver socket or module control, simply press the "Learn" button. The LED will start to blink; slide the "LEARN" switch to "DEL", the LED will blink twice to confirm that the remote control has been removed from the receiver sockets memory.

Setting Timer :

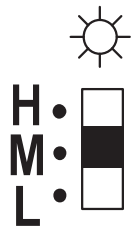
The HomeEasy indoor PIR will switch on the receiver socket or module for a predefined period of time; this can be set between 5seconds and 10 minutes.

To select the time period, remove the front cover and slide the switch to the required timer setting.



Day/Night Setting:

The PIR can operate one of three settings depending upon the ambient light level, to alter the light setting remove the front cover and use the slide switch to select the setting.



H PIR will operate 24Hrs a day

M PIR will operate between 4pm to 6am

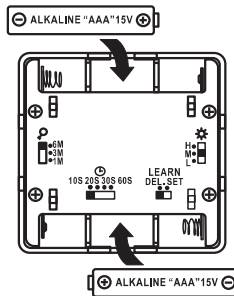
L PIR will operate between 6pm to 6am

Times are approximations only

Changing Batteries:

1. Unclip the front cover from the front of the PIR using a small screw driver.

2. Remove the batteries and replace using 2 new 'AAA' batteries, making sure the polarity is correct.



Always dispose of old batteries in an environmentally responsible way

3. Replace the front cover making sure the clips are correctly aligned and firmly push the case together.

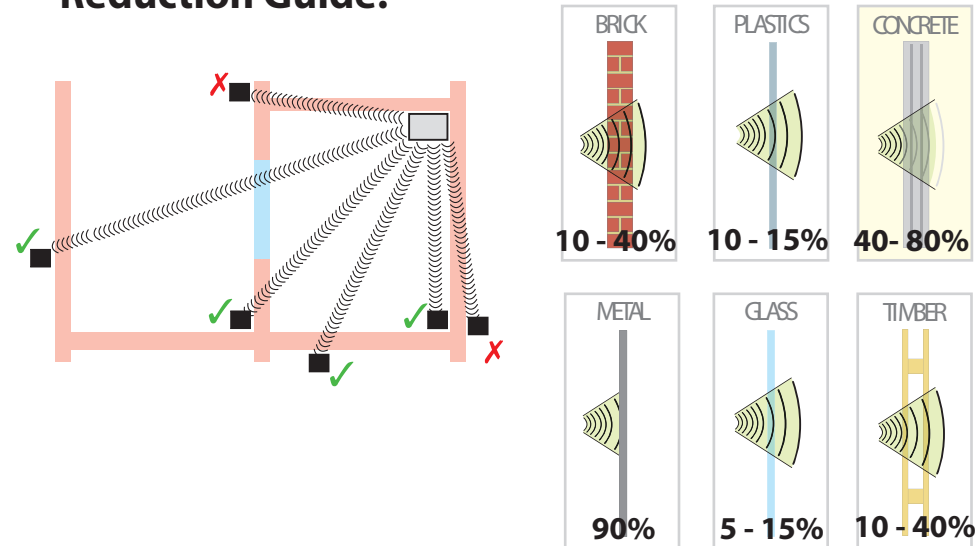
Help Section :

No Activation: Check the battery level and polarity, replace with new batteries if necessary

Receiver Stays ON Continuously: The PIR may be suffering from false activation, try adjusting the position and detection angle.

RF Range: The radio signals operating distance is reduced when the signal has to pass through walls. The radio signals achieve a range of 25m; this can be reduced depending on the type of material.

Range Reduction Guide:



Product Specification:

Remote Control: HE-303
 Battery: 2 * AAA
 Range: 25Metres (Open Distance)
 Frequency: 433.92MHz

Warning: Never Exceed the Product Specification

Contact:

C H Byron
 34, Sherwood Rd
 Aston Fields
 Bromsgrove
 B60 3DR

Helpline: 0845 2301 231

Tel: 0845 2301231
 Fax: 01527 57701
 Web: www.chbyron.com
 E-mail: support@chbyron.com

